



QuietClip™ CIC Installation Guidelines

Installation Guidelines

Tools and Materials Needed

Tools

- Chalk Line, Tape Measure, Power Drill (with appropriate bits for fasteners), utility knife

Materials

- Drywall (e.g. 5/8" gypsum board)
- 25 gauge furring hat channel, hemmed edge (important); see details below
- Non-Hardening (Acoustical) Sealant
- Tape/Mud

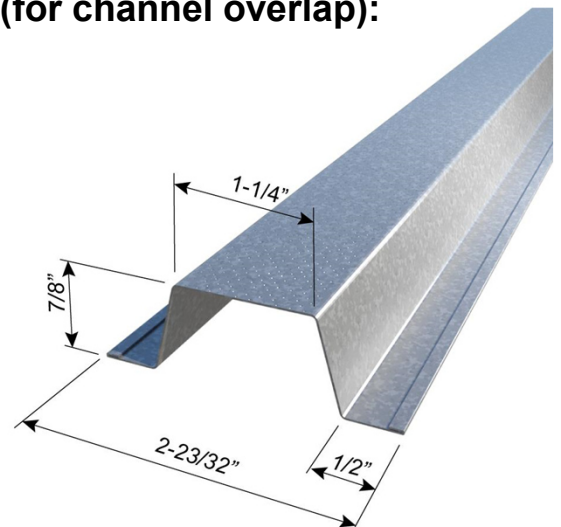
Fasteners

- **QuietClip™ Fastener Recommendation:**
Wood Studs, Wall: min. 2-1/2" long, #8, coarse thread wood screws
Wood Studs, Ceiling: min. 3" long, #8, coarse thread wood screws
Steel Studs, Wall/Ceiling: 1-5/8" long, #8, fine thread self-tapping screws
- **Drywall Fastener Recommendation:**
max. 1-5/8" Drywall Screws
- **Furring Hat Channel Fastener Recommendation (for channel overlap):**
7/16" fine-thread self-tapping screws

Furring Hat Channel Requirement

25 ga., 7/8" furring hat channel, with hemmed edge
Depth: 7/8"
Width Top: 1-1/4"
Width Bottom: 2-23/32"

For example: Clark Dietrich 087F125-18



© Clark Dietrich: Model 087F125-18

Installation Guidelines

For Walls using QuietClip™ CIC

Walls with 1-2 Layers of 5/8" Gypsum Board:

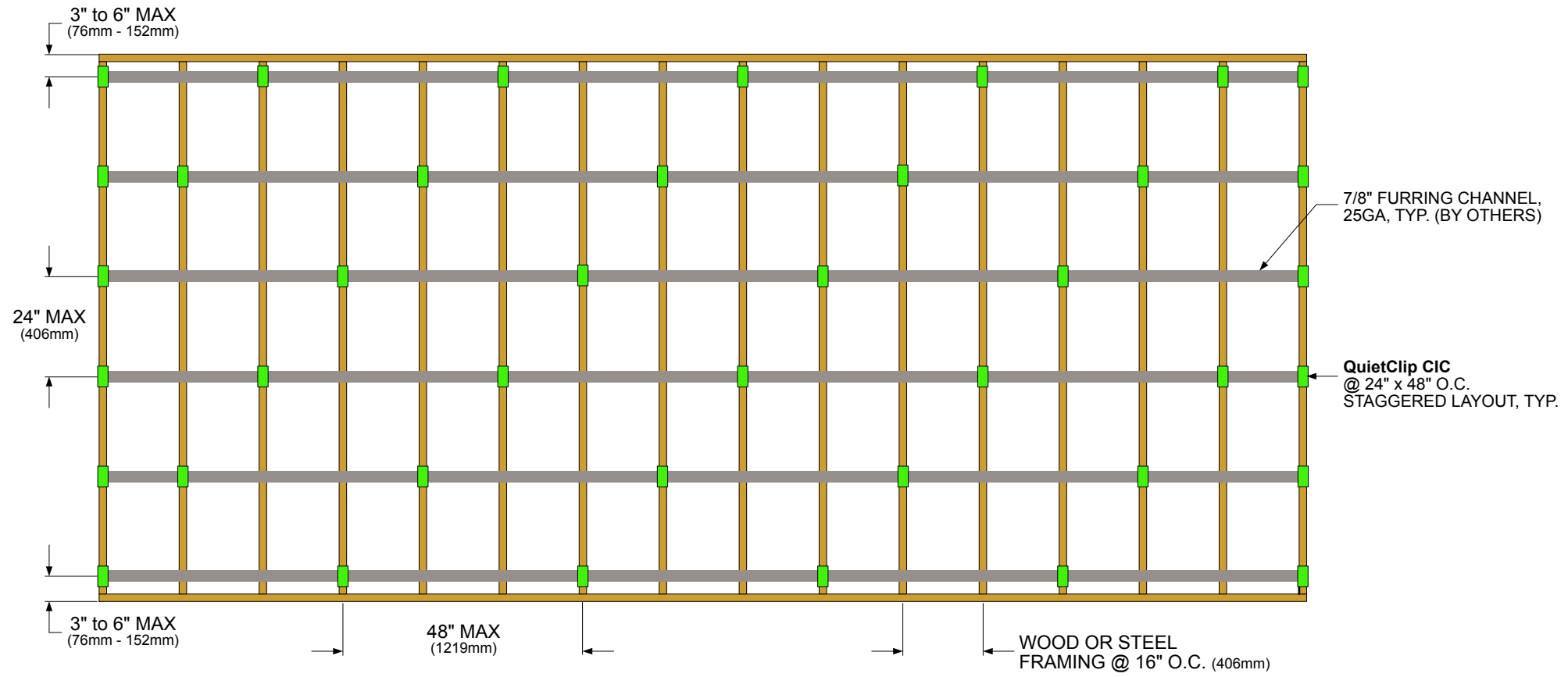
1. Depending on your stud spacing, view the respective QuietClip drawing showing the installation layout for either 16" or 24" stud spacing. The standard clip spacing for either stud spacing is 24" x 48".
2. The top and bottom rows of furring hat channel and QuietClip isolators should be 3-6" away from floor and ceiling.
3. Use chalk line to mark the remaining rows of furring channels and clips. Ensure to never exceed 24" in the vertical direction.
4. Now follow the respective clip layout and spacing drawings. Ensure that the horizontal spacing of clips never exceeds 48".
5. Affix the QuietClip CIC clips onto the studs using suitable fasteners (see fastener recommendation below). Tighten until QuietClip CIC is snug and firm against the studs.
6. Once full rows of QuietClip are installed, snap the furring hat channels into the clips. Place the bottom edge of the furring channel into the clip bracket, then squeeze the channel firmly and push the top edge into the clip bracket too. Ensure that the furring hat channels are only touching the clips. At the end of the wall and ceiling, furring channels should NOT make contact with any adjacent/cornering wall or ceiling to prevent noise transfer (flanking noise).
7. When joining two (2) pieces of furring hat channel: Overlap by 6" and ensure the overlap is in the center of the cavity, between studs. Secure with two (2) 7/16" fine thread self-tapping framing screws.
8. Before installing drywall, use 1/4" shims (important) at the bottom of the wall to rest the drywall on them in order to keep the drywall off the floor. Install first layer of drywall (gypsum board) against the furring hat channels using 1-5/8" drywall screws. Be sure to leave a 1/4" gap around all perimeter edges (sides, top, bottom). Hard connections would transmit sound (aka "flanking noise").
9. When installing multiple layers of gypsum board, repeat Step #8. but offset seams of drywall layers for increased stiffness and acoustical performance. Again, be sure to leave a 1/4" gap at perimeter edges to avoid the drywall touching non-isolated items.
10. Remove shims (important). Caulk around the perimeter using non-hardening (acoustical) sealant. Allow sealant to harden before advancing to next step
11. Tape and Mud as usual.

Installation Guidelines

For Ceilings using QuietClip™ CIC


Walls with 1-2 Layers of 5/8" Gypsum Board:

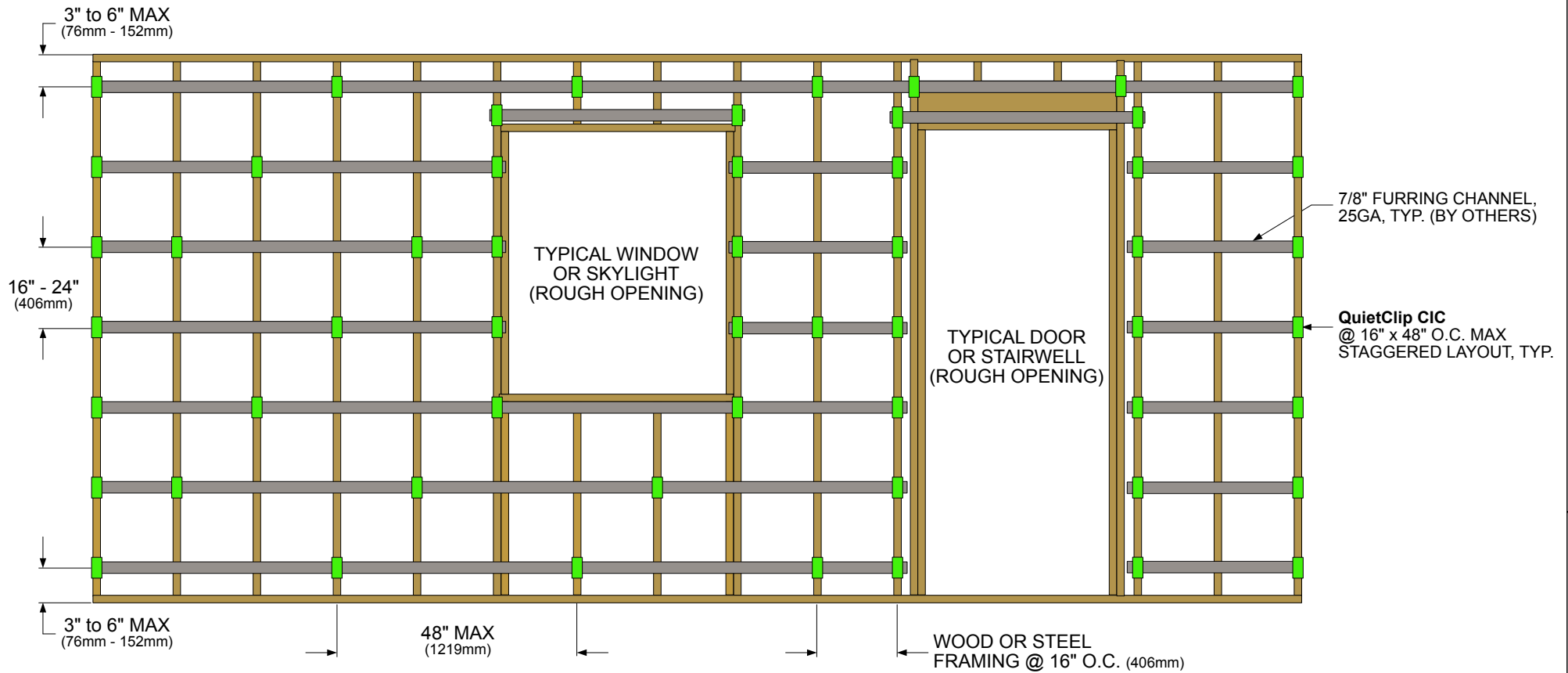
1. Depending on your stud spacing, view the respective QuietClip drawing showing the installation layout for either 16" or 24" stud spacing. The standard clip spacing for either stud spacing is 24" x 48" on-center.
2. The first and last rows of furring hat channel and QuietClip isolators should be 3-6" away from the perimeter.
3. Use chalk line to mark the remaining rows of furring channels and clips. Ensure to not exceed 24" on-center spacing.
4. Now follow the respective clip layout and spacing drawings. Ensure that the horizontal spacing of clips never exceeds 48".
5. Affix the QuietClip CIC clips onto the joists using suitable fasteners (see fastener recommendation below). Tighten until QuietClip CIC is snug and firm against the joists.
6. Once full rows of QuietClip are installed, snap the furring hat channels into the clips. Place the bottom edge of the furring channel into the clip bracket, then squeeze the channel firmly and push the top edge into the clip bracket too. Ensure that the furring hat channels are only touching the clips. At the perimeter, furring channels should NOT make contact with any adjacent wall to prevent noise transfer (flanking noise).
7. When joining two (2) pieces of furring hat channel: Overlap by 6" and ensure the overlap is in the center of the cavity, between joists. Secure with two (2) 7/16" fine thread self-tapping framing screws.
8. Install first layer of drywall (gypsum board) against the furring hat channels using 1-5/8" drywall screws. Be sure to leave a 1/4" gap around all perimeter edges. 1/4" spacers (cardboard, foam, plywood, etc.) could be useful spacers. Hard connections would transmit sound (aka "flanking noise").
9. When installing multiple layers of gypsum board, repeat Step #8. but offset seams of drywall layers for increased stiffness and acoustical performance. Again, be sure to leave a 1/4" gap at perimeter edges to avoid the drywall touching non-isolated items.
10. Remove any spacers (important, if spacers were used). Then caulk around the perimeter using non-hardening (acoustical) sealant. Allow sealant to harden before advancing to next step
11. Tape and Mud as usual.



SCALE: N.T.S.

SHEET 1/1

	DWG NO 1596-QC-CIC REV DATE 12/08/2023	TITLE QUSTICS QuietClip CIC, WALL OR CEILING ASSEMBLY (1-2) LAYERS GYP. 24" VERT. SPACING ON 16" STUDS, TYP.	QUSTICS.com
---	---	--	-------------



SCALE: N.T.S.

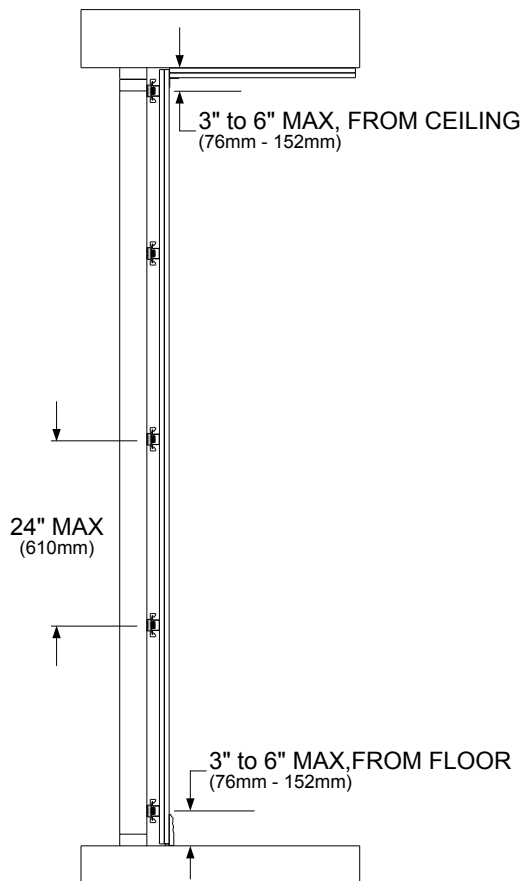
SHEET 1/1

NOTE:

1. GYPSUM BOARD SHALL BE MOUNTED WITH STAGGERED SEAMS BETWEEN LAYERS, FINAL LAYER SHALL BE TAPED AND MUDDLED AT JOINTS.

2. ALL SEAMS AND PENETRATIONS SHALL BE CAULKED AIRTIGHT WITH ACOUSTICAL NON-HARDENING CAULK.

3. WALL SEAMS SHALL BE TAPED AND MUDDLED



QuietClip CIC
@ 24" x 48" O.C.
STAGGERED LAYOUT, TYP.

7/8" FURRING CHANNEL,
25GA, TYP. (BY OTHERS)

WOOD OR STEEL
FRAMING, TYP.
(BY OTHERS)

RESERVE ISOLATED
GYP. 1/8"-1/4" FROM
FLOOR TO AVOID
SHORTING ASSEMBLY

CAULK SEAM AIRTIGHT
WITH NON-HARDENING
ACOUSTICAL CAULK.

QuietClip PIT-C02
2" x 1/4" FOAM STRIP,
ADHESIVE BACKED, TYP.

SEAM TO BE CAULKED
AIRTIGHT, TAPED AND
MUDDLED (BY OTHERS)

(2) LAYERS 5/8" GYP.
STAGGERED SEAMS,
TAPED & MUDDLED, TYP.
(BY OTHERS)

HEAD OF WALL

TOE OF WALL

SCALE: N.T.S.

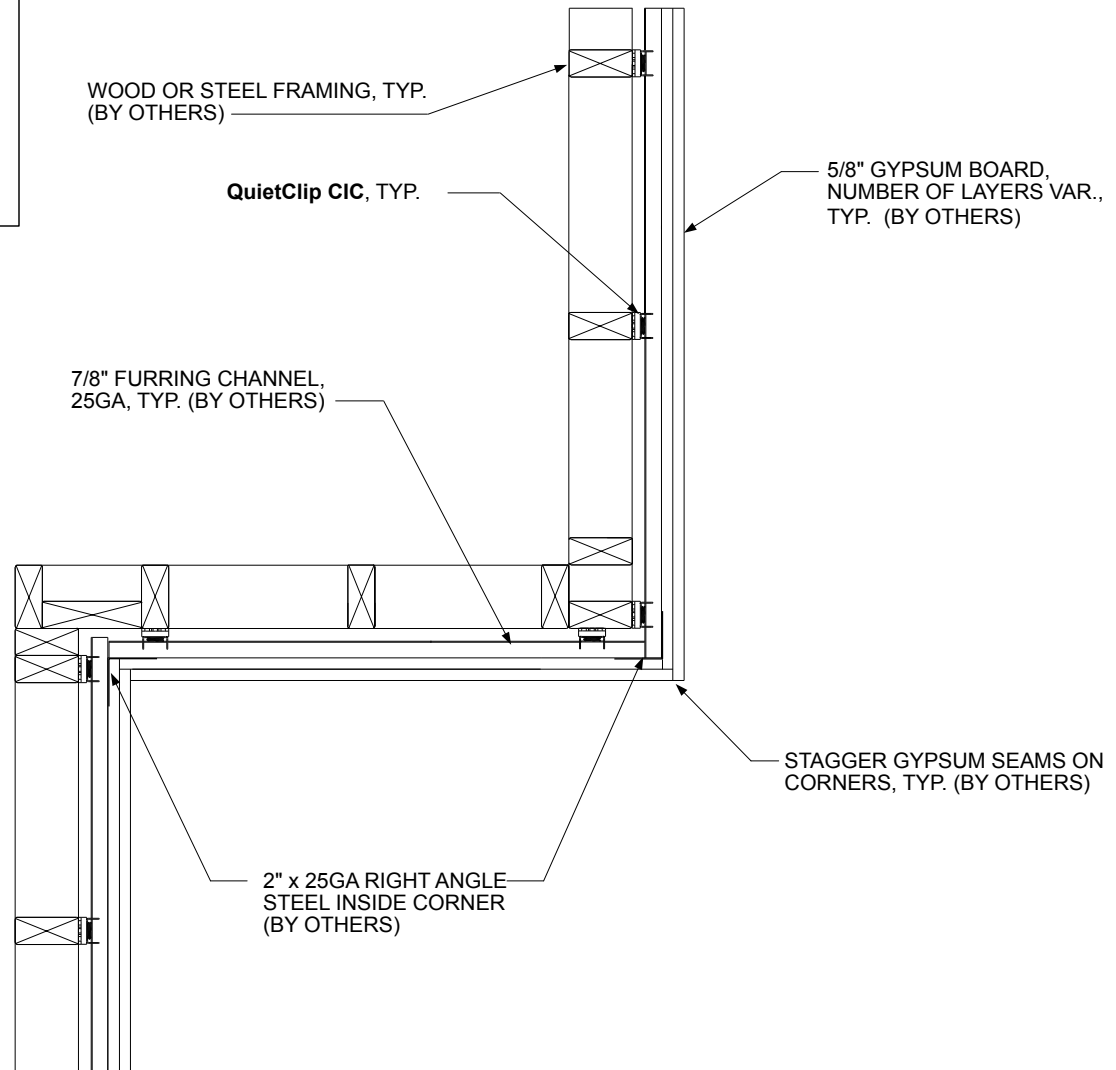
SHEET 1/1

NOTE:

1. GYPSUM BOARD SHALL BE MOUNTED WITH STAGGERED SEAMS BETWEEN LAYERS, FINAL LAYER SHALL BE TAPED AND MUDDLED AT JOINTS.

2. ALL SEAMS AND PENETRATIONS SHALL BE CAULKED AIRTIGHT WITH ACOUSTICAL NON-HARDENING CAULK.

3. WALL SEAMS SHALL BE TAPED AND MUDDLED



SCALE: N.T.S.

SHEET 1/1

Who Are We

We are a team of passionate individuals that care about good building acoustics and healthy environments. Our backgrounds range from former acoustical consultant, to project manager for manufacturers, to installer, to technical leader. This wide level of experience is reflected in the solutions we develop.

What We Do

“Create Quiet” is our mission. We aim to provide solutions that perform better than conventional products – while being environmentally friendly, good for people and installers, and allow for good indoor air quality.

As part of our mission, we aim to avoid fiberglass, chemical binders, and other materials that contain significant amounts of formaldehyde and volatile organic compounds.

What Sets Us Apart

QUSTICS has developed acoustical solutions that are formaldehyde-free, do not use chemical binders, do not contain fiberglass, and are convenient to handle and to install. We care about the environment, people, and indoor air quality.

Knowing that the best product only performs well when properly installed, we strive to provide on-site installation support for every project.

QUSTICS LLC

1200 Corporate Blvd
Building D 9-04
Lancaster, PA 17601
United States

☎ 800-679-6679
support@qustics.com

qustics.com