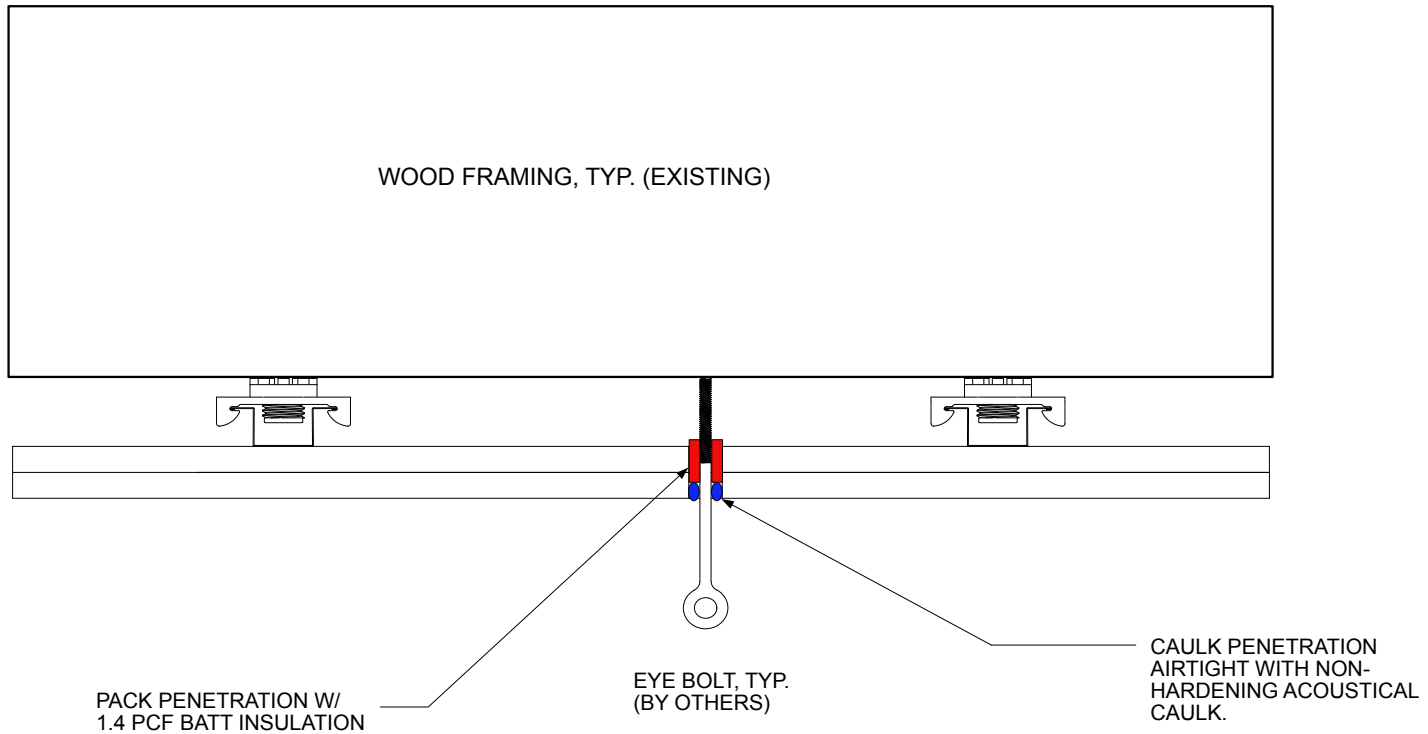


NOTE:

1. FOR 1/4" EYE-BOLT: PENETRATION SHALL BE 1/2"- 3/4" O.D. , BOLT SHALL BE CENTERED IN HOLE AND NOT ALLOWED TO CONTACT GYP.

2. ALL PENETRATIONS SHALL BE PACKED W/ 1.4 PCF BATT INSULATION AND CAULKED AIRTIGHT WITH NON-HARDENING ACOUSTICAL CAULK.



SCALE: N.T.S.

APPROVED

SHEET 1/1